



World Food Programme

# WFP Mozambique

## Situation Report #1

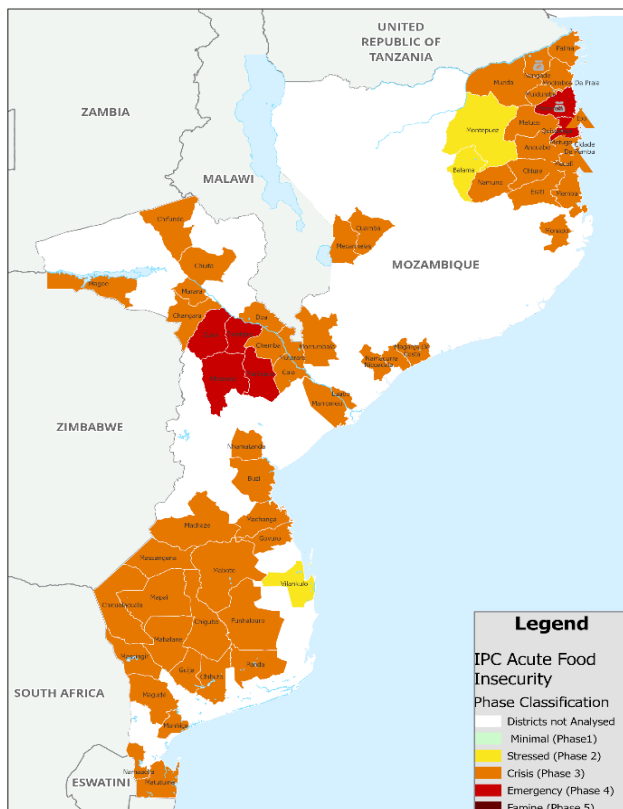
26 August 2024

### In Numbers

- **1.8 million** people in need.
- **1.1 million** people targeted for emergency assistance by the Food Security & Livelihoods (FSC) cluster.
- **776,639** people in IPC4 (Oct-24/Mar-25).
- **7** provinces affected.
- **7** provinces affected.

### Highlights

- El Niño induced rainfall shortage and above average temperatures have resulted in drought conditions in central and southern Mozambique.
- 3.3 million people are projected to face food insecurity (IPC3+) during the lean season (October 2024 – March 2025).
- WFP is targeting 355,827 people during an initial three-month response (November 2024 – January 2025) with emergency food assistance (204,327 people); nutrition activities (145,000 children under 5 and pregnant and breastfeeding women and girls); and school feeding (6,500 students).
- WFP Country Director visited drought affected province of Manica and witnessed dire hunger conditions affecting women and children.



Map: [Integrated Food Security Phase Classification \(IPC\) Food Security Projection](#) (October 2024-March 2025).

### Situation Update

- El Niño induced rainfall shortage and above average temperatures have resulted in drought in central and southern provinces of Mozambique, impacting agricultural production for vulnerable communities.
- As a result, around 2.8 million people are facing food insecurity (IPC 3+), including 510,151 people in IPC4 (emergency level of food insecurity) between April and September 2024. During the lean season (Oct-24 / Mar-25), the situation will further deteriorate with around 3.3 million people projected to face food insecurity, of which 390,886 in IPC4 in the provinces affected by El Niño.

- The prevalence of food insecurity in the assessed population has risen from 20 percent in 2023 to 33 percent in 2024 mostly due to the El Niño induced drought. The number of people severely food insecure (IPC4) is almost four times higher than in 2023.
- Due to limited access to food and water, vulnerable groups subject to protection risks tend to opt for and/or rely on negative and harmful coping mechanisms for survival, including risks of sexual exploitation and abuse. For children and adolescents, it directly affects school attendance.
- El Niño is impacting the price of staple food crops pushing thousands into vulnerability. Overall, maize grain prices in June 2024 were 40 percent higher or more compared to last year, and 55 percent higher than the five-year average. Above-average prices, coupled with crop production failure and limited income opportunities, erode the purchasing power of poor and very poor households, leading to food consumption deficits and hunger.

### WFP Response

WFP Mozambique has developed an El Niño Response Strategy targeting 1.1 million people for 6 months (November 2024 - April 2025) prioritizing the worst affected districts and population in emergency phase (IPC4) to prevent further deterioration of food insecurity, malnutrition and school dropouts which are already very critical. WFP's response will focus on the provinces of Gaza, Inhambane, Sofala, Manica, and Tete.



### Humanitarian Food Assistance

- The current response foresees the provision of a monthly in-kind ration covering 82 percent of an individual's kcal needs. The food basket will be composed of cereals (10kg/pers/month), pulses (2kg/pers/month), oil (0.8kg/pers/month), and iodised salt (0.1kg/pers/month).
- To improve the nutritional value of the food basket, Corn-Soy Blend Plus (CSB+) with sugar will be added to the in-kind distribution. Due to limited resources, the CSB+ will only be added in the prioritized vulnerable districts of Manica.
- In view of the increase in market prices highlighted above, and a cost-benefit analysis between different modalities, WFP is currently prioritizing in-kind food assistance in the El Niño response.

## Clusters and Common Services



### Lifesaving Nutrition Support

- WFP's response plan envisages nutritional support to 135,000 children under the age of 5 (CU5) and 10,000 pregnant and breastfeeding women and girls (PBWG) for 6 months.
- The nutrition response will focus on the prevention and treatment of acute malnutrition. Additionally, the response will include a comprehensive social and behavioural communication component (cooking school, counselling sessions, radio listening/debates) to promote healthy behaviours and practises targeting household's diet as well as focusing on young children.
- Using current resources, WFP will prioritize 12 districts identified based on a nutrition vulnerability index jointly developed with UNICEF to guide the nutrition cluster response. These districts will receive moderate acute malnutrition supplementation support, targeting CU5 and PBWG.



### Emergency School Feeding

- School Feeding will aim at supporting around 150,000 primary school students in line with the percentage of students in primary school through six cycles of Take-Home Rations (THR) or one year of on-site meals.
- The timeframe for the intervention will be six months to one-year depending on the program modality.
- With the available resources, WFP will provide THR to 6,500 students in Caia district, Sofala province, for two school trimesters. WFP is engaging with local authorities on school selection.



### Supply Chain

- Supply Chain has prepositioned Global Commodity Management Facility (GCMF) and smallholder farmers procured stocks in Country, which will be used to cover the initial response. Regional GCMF and internationally procured stocks will be considered to fulfil the gaps.
- WFP Supply Chain has secured approximately 20,000 tons of transport payload capacity for the response.
- Nacala and Beira Hubs are the main source for locally procured commodities, while Maputo will be the main entry border for regionally procured commodities.
- Beira and Maputo will be used as the main Hubs for the Logistics response. Tete transshipment point will be used to support the logistics response at Tete province and in the northern districts of Manica.



### Food Security Cluster

- The Food Security Cluster engaged with 16 partners for the preparation of the Drought Flash appeal, targeting 1.4 million people, of which 1.1 million under the food security and livelihoods cluster.
- Information about the impact of El Niño continues to be disseminated amongst FSL Partners on weekly basis. Mapping of response plans and assessments ongoing since June 2024.



### Logistics

- The National Logistics Cluster will work closely with the humanitarian community on information sharing regarding logistics activities and gaps.



### Telecommunications

- WFP has prepositioned back-up communication (satellites) systems in field offices for rapid deployment.
- Satellite equipment and computers have been distributed to Government partners to support communication capacities.
- WFP will provide capacity strengthening training on emergency ICT practices to UN and Government partners in September.

### Resource Mobilisation

- The UN in Mozambique has launched an El Niño [Drought Appeal](#) for food security and livelihoods, water, sanitation and habitat, nutrition, and protection sectors, for a total of US\$222 million.
- WFP Mozambique net funding requirements for the El Niño response strategy (November 2024 – April 2025) stand at a total of US\$154 million.

Photo on first page: A woman in her dried maize field in Sofala province, April 2024. ©WFP/Gabriela Vivacqua

## Contacts

- Antonella D'Aprile**, WFP Country Director and Representative, [antonella.daprile@wfp.org](mailto:antonella.daprile@wfp.org)
- Pablo Rodriguez**, Food Security Cluster Coordinator, [pablo.rodriguez@wfp.org](mailto:pablo.rodriguez@wfp.org).
- Conor Hollywood**, Partnerships Officer, [conor.hollywood@wfp.org](mailto:conor.hollywood@wfp.org).

## WFP Mozambique El Niño Emergency Response

	Total Requirements (in USD)	Total Received (in USD)	Net Funding Requirements (in USD)	People Targeted	People Assisted <sup>1</sup>	Female	Male
<b>Overall response plan</b>	170,000,000	16,000,000	154,000,000	1.1 million <sup>2</sup>	N/A	N/A	N/A
<b>WFP's response plan based on available resources, as of 26 August 2024</b>							
<b>Food assistance</b>				204,327	N/A	N/A	N/A
<b>Nutrition assistance</b>				145,000 CU5 and PBWG	N/A	N/A	N/A
<b>School Feeding</b>				6,500 students	N/A	N/A	N/A

<sup>1</sup> WFP Mozambique's El Niño response will begin at the end of October, following the Presidential electoral period.

<sup>2</sup> The overall number of people targeted (1.1 million) considers a fully resourced response strategy. The number of people targeted per intervention reflects the operational response considering resources mobilised as of 26 August 2024 and is subject to change.